

# WORLD 世界室内设计 INTERIORS 经典

上海万创文化传媒有限公司 / 编

Hotel  
酒店

Restaurant & Club & SPA  
餐厅 & 俱乐部 & 洗浴

Office  
办公室

Retail & Exhibition  
专卖店 & 展示

Library & School & Hospital  
图书馆 & 学校 & 医院

Residence  
住宅

凤凰出版传媒集团 | 凤凰空间  
江苏人民出版社 | IFENGSPACE

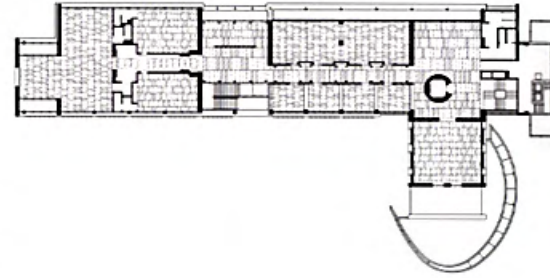
# Tiandi Yijia Hangzhou

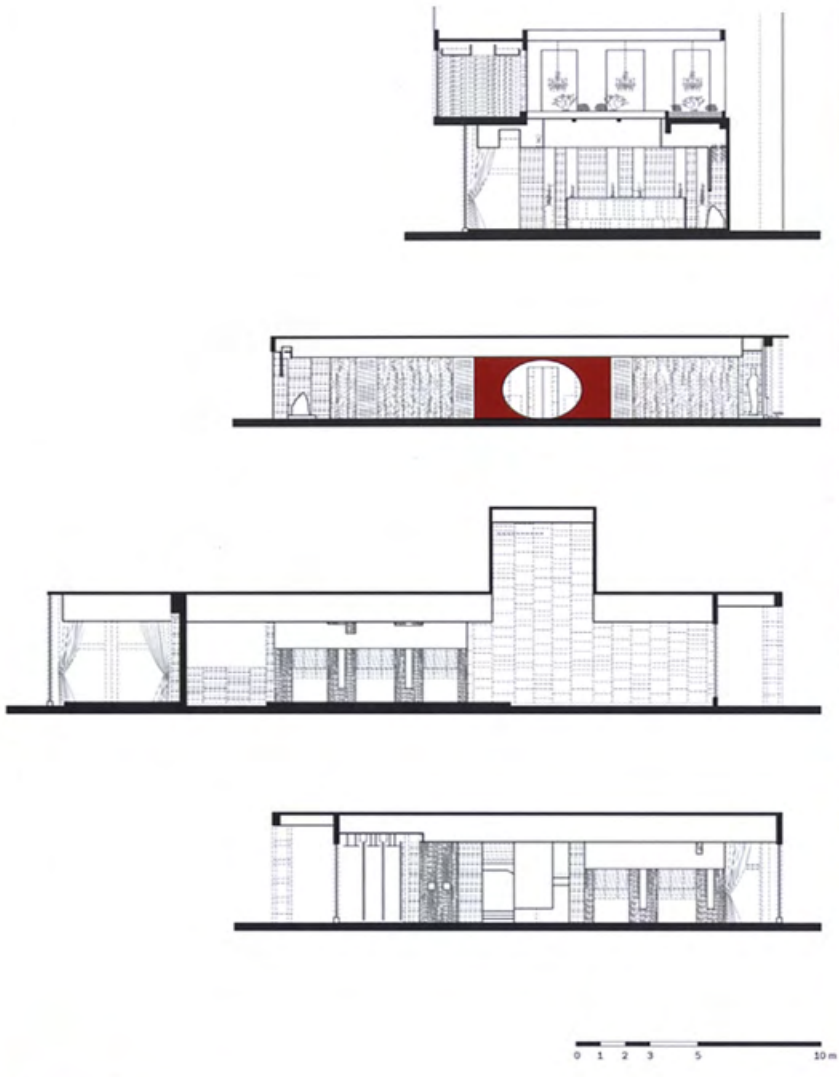
杭州天地一家

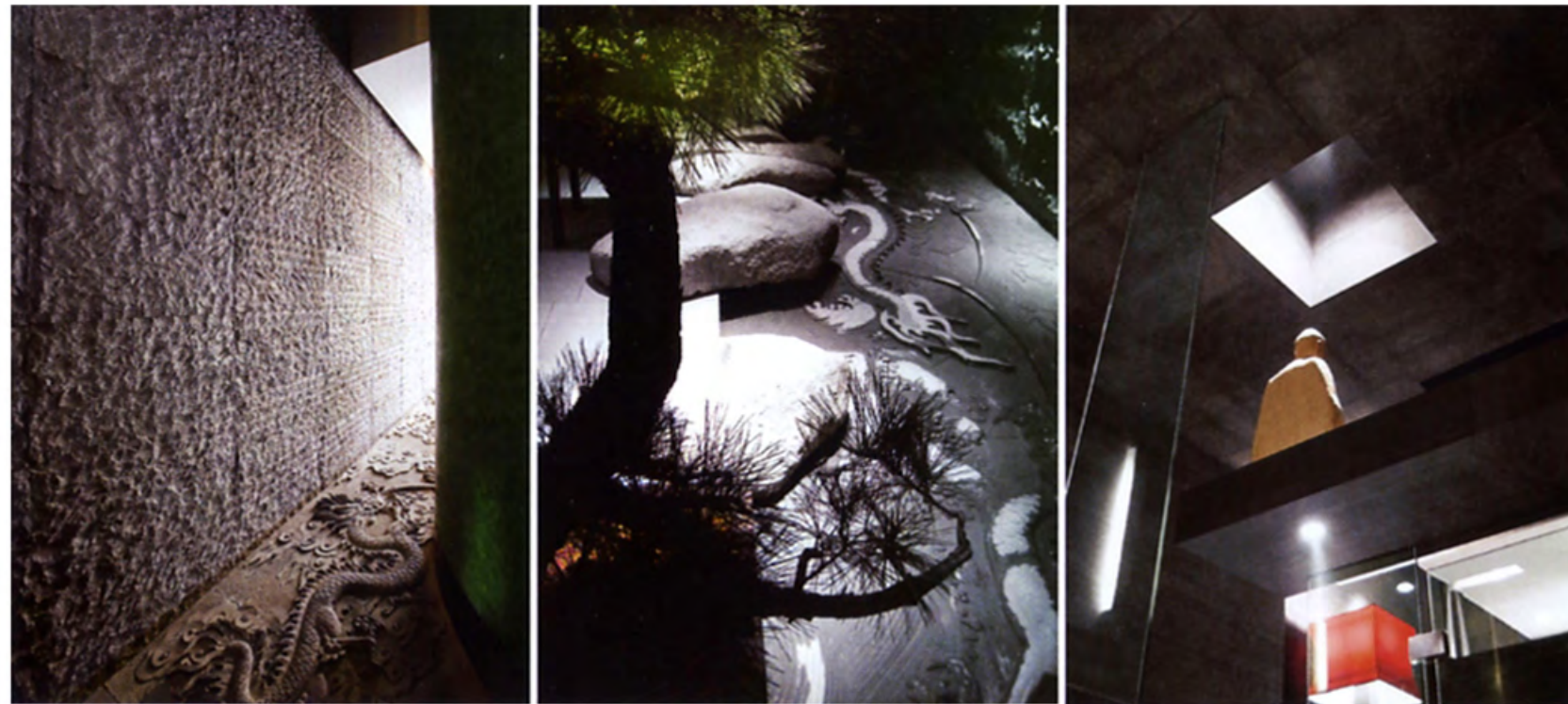
Design / Studio Lipparini  
Designer / Mauro Lipparini  
Location / Hangzhou, China  
Area / 1470 m<sup>2</sup>

Indeed, Tiandi Yijia is a restaurant unlike any other. Its creator, Italian architect Mauro Lipparini, describes it as "a voyage into the intellectuality of flavors", partly uncovering the path that he himself has had to pursue before seeing the completion of his project.

"An intensely expressive stair, an element of pure theatre and architectural experience that the guests can fully appreciate advertisements when they move up and down through it. The central element, which features rock, glass and painted walls, is its core and spirit, like a cut diamond which reveals its artistic and historic treasures at each level. And in fact, all the works of art on exhibit inside the Tiandi Yijia in Hangzhou are original from the period of the southern Song Dynasty. The pure materials, grey and green stone, and dark woods, generate different atmospheres, with the help of the soft lighting, yet they all share a perception of concentrated intimacy and a personal relationship with the space."

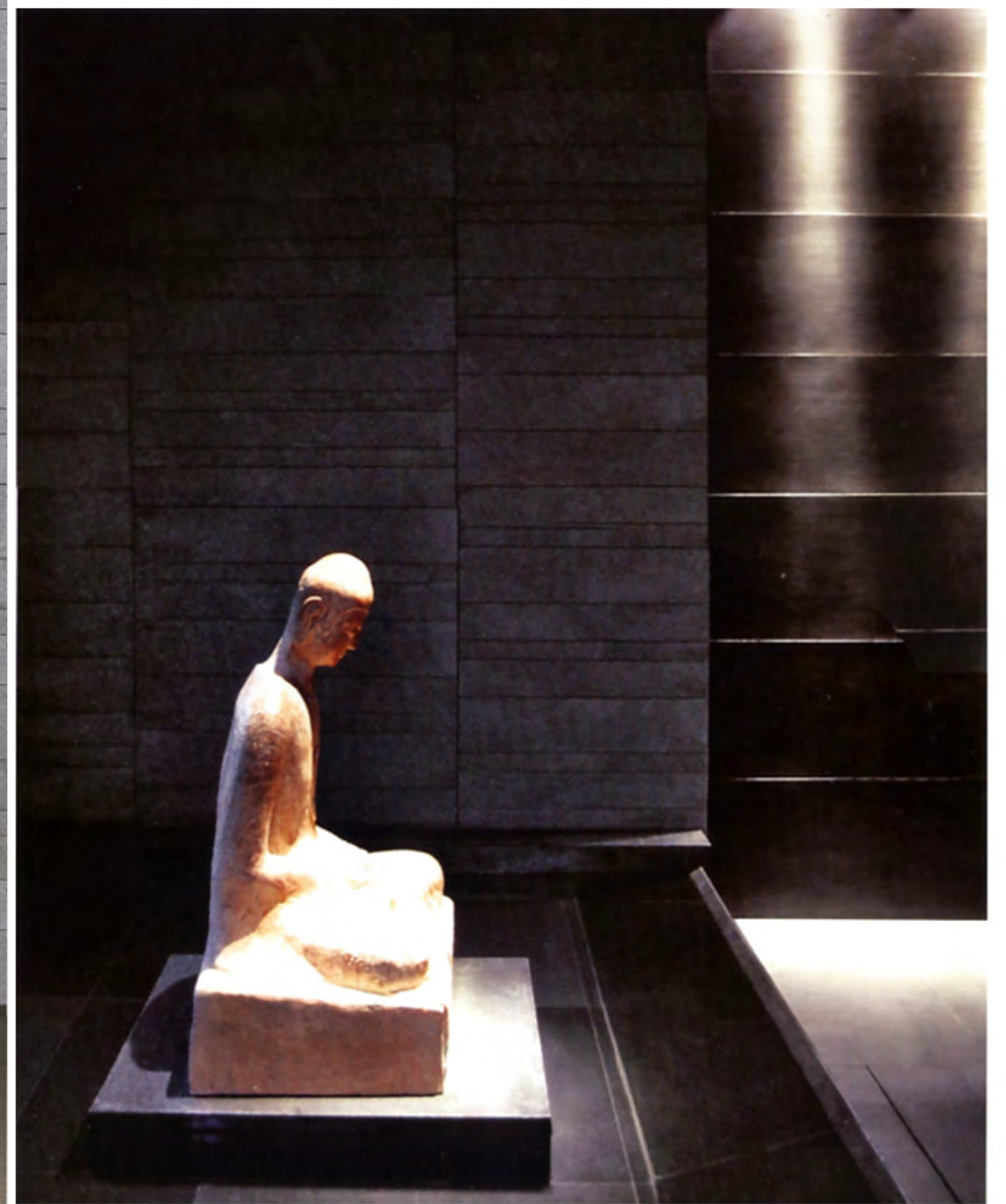
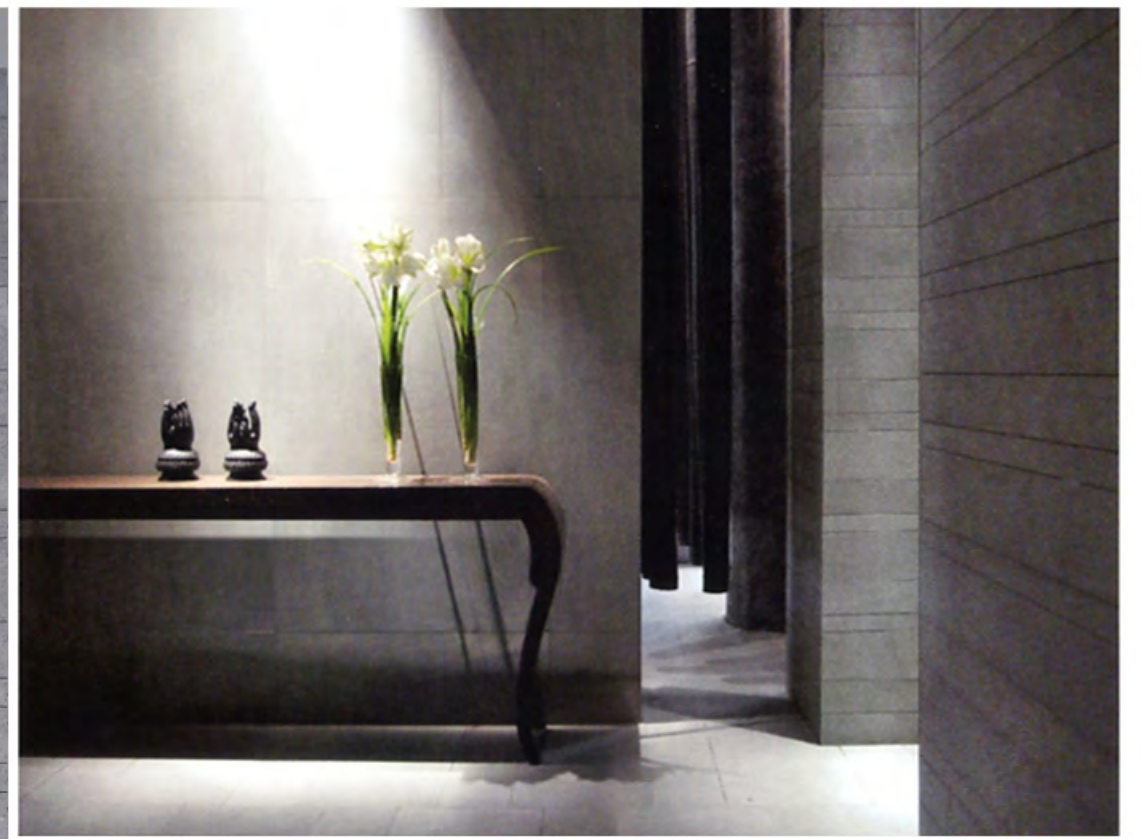






天地一家确实是一个与众不同的餐厅。餐厅的设计者，意大利建筑师Mauro Lipparini将其形容为“一段充满知性风味的航程”，这些许透露出，在项目完成之前，设计师本人也不得不追寻的那种意境。“富有强烈表现力的楼梯，纯粹的戏剧元素以及建筑经验，使得客人在通过楼梯上上下下移动的同时，就可以充分地欣赏其间的广告。以岩石、玻璃和彩绘墙为特征的主要元素，是整个设计的核心和精神，就像经过切割的钻石，通过它的每一个切面来显露其艺术性及历史价值。事实上，在此餐厅中展出的全部艺术品均源自于南宋时期。纯净的材料、灰色和绿色的石头、黑木，在柔和灯光的映衬下，营造出独特的气氛，但它们也和整个空间共享着高度亲密和私人的空间感觉。”





# Tiandi Yijia Shanghai

上海天地一家

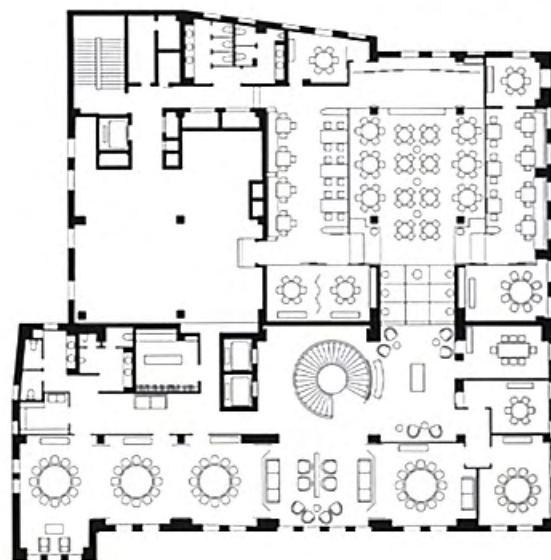
Design / Studio Lipparini

Designer / Mauro Lipparini

Location / The Bund 6, Shanghai, China

Area / 250 m<sup>2</sup>

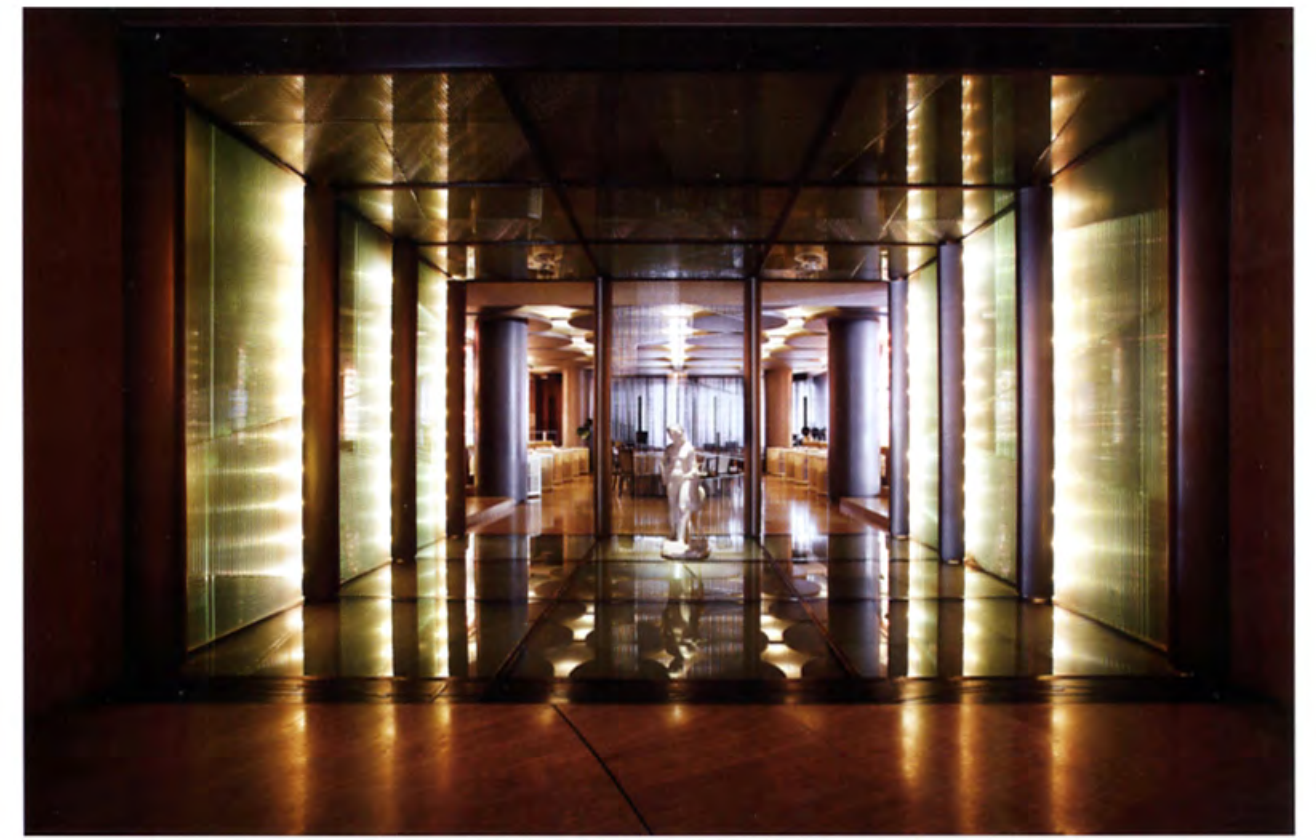
The designer embarks on the voyage in the lounge. Dark Chinese oak herringbone parquet and a vibrant yet soothing light greet clients, in an environment dominated by the warm tones of the draperies, rugs, upholsteries and precious wood furnishings, and a large wall on which hangs a stylized geographic map that recalls the adventurous Paris-to-Beijing car expeditions. In the foyer leading to the main dining hall, the light gains intensity, becoming almost "schizophrenic" in a triumph of reflections. The grand hall is divided into three naves and here the lighting becomes more mysterious and subdued, with enormous chandeliers that hang like stalactites of etched crystal, evoking the brilliance of strass crystals and jewels and the splendor of the dresses of the era. The furnishings of the dining hall were especially designed by architect Mauro Lipparini and crafted by Chinese artisans. The custom-made furniture interprets the Art Deco style and blends with armchairs, sofas, wall lamps, sculptures and ornaments original of the period. Each is structurally different from the next, and the adjoining VIP rooms can be linked to create a single imperial hall for special functions. The leitmotif of the design is the painstaking pursuit of elegant and stunning materials and finishings.





设计师于休息室开始了这段旅程。黑色的中国橡木人字形地板和柔和而又充满活力的灯光迎接着客人的到来。窗帘、地毯、沙发和珍贵的木质家具打造一个温暖的环境。巨大的墙上挂着风格独特的地图，让人们不禁想象出这是一段从巴黎到北京的汽车探险之旅。通往餐厅中心大堂的门厅，强烈的灯光照射形成了一种“分裂”反射。宏伟的大厅被分为三个部分。这里的灯光变得更加神秘而柔和。像钟乳石蚀刻水晶般悬挂的巨大吊灯，唤起了富铅玻璃水晶和宝石的辉煌以及时装的光彩。餐厅的全部家具都是由设计者Mauro Lipparini特别设计，并且由中国工匠精心制作。定制家具诠释了装饰的艺术风格，并且融合了扶手椅、沙发、壁灯、雕塑和这一时期的原始饰品。每个房间都风格各异，相邻的各贵宾室可以互相连接，变成具有特殊用途的大厅。该设计的主旨在于对优雅和迷人的材料以及装饰的竭力追求。







# Domus Tiandi Beijing

北京家天地

Design / Studio Lipparini

Designer / Mauro Lipparini

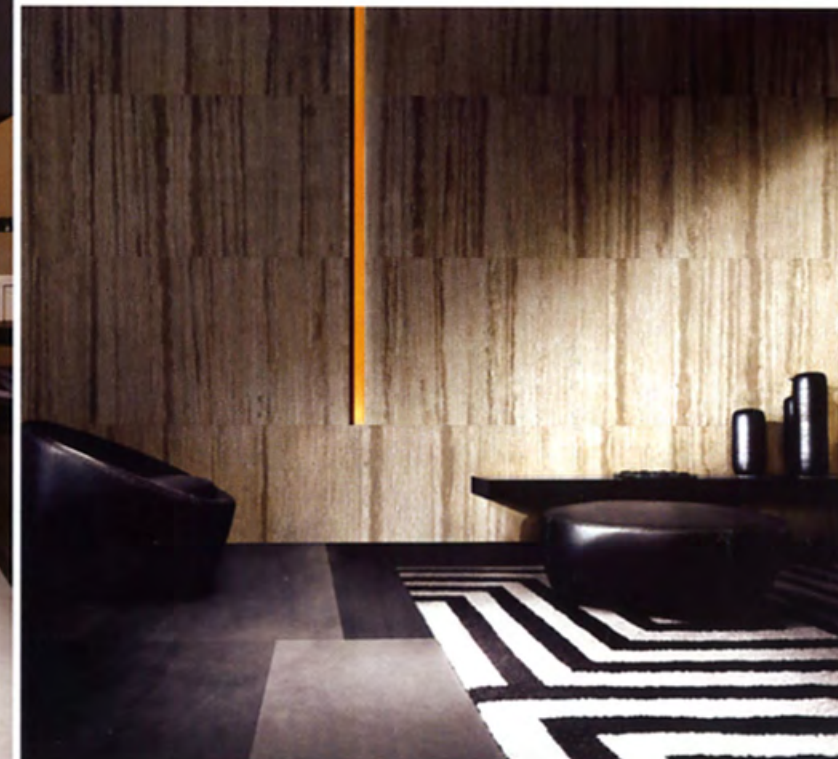
Location / Jin Bao Street, Beijing, China

The Domus Tiandi flagship Beijing location is on Jin Bao Street. The simplicity of the showroom building's preexisting architecture, its size, and the traditional nature of its materials led quite naturally to the floor plan layout. Two alternate main entrances emphasize the showroom's platform-like effect—the entire second floor is set alongside a gigantic, continuous storefront window. The main entrance provides immediate and powerful testimony to Mauro Lipparini's innovative renovation of the building's interiors and his personal sense of architecture and interior design. There is a simple and straightforward spacial distribution; serene exteriors stand in counterpoint to the inviting chromaticism and textural palette of the interiors. In addition, there is Lipparini's signature, and the contemporary use of materials brings the furniture of each different brand together in an environment that is both welcoming and uplifting—the unmistakable identity of Domus Tiandi. The all-white staircase that connects the showroom's two floors is architectural expression in its purest form; suspended over a rectangular reflecting pool, the staircase appears to float magically in space. These elements give the showroom an intimate feel, as if it were a home itself, and embody Mauro Lipparini's motto for Domus Tiandi: "Design for Living in A Human Space."





家天地北京旗舰店坐落十金宝街。展厅建筑物的简洁、规模以及其材料的传统质地都在楼层的规划图上得到体现。两个交替出口处突出了展厅平台，整个第二层紧挨着店面窗户。主要入口处的设计体现了Mauro Lipparini对建筑物内部的创造性重塑以及其对内部建筑的独特见解。建筑分布简洁明确，建筑物外部与内部成对点。此外，还有Lipparini的签字，不同品牌的家具被汇集在一起。连接展厅两层的楼梯悬空于矩形倒影池的上方，仿佛悬空于太空之中，犹如魔术一般。这些都使展厅给人一种宾至如归的感觉，同时也反映出Mauro Lipparini给家天地的一句格言：为人类的居住空间而设计。



# Todoroki-Ku

东京Todoroki-Ku公寓

Design / Studio Lipparini  
Designer / Mauro Lipparini  
Location / Tokyo, Japan  
Area / 125.4 m<sup>2</sup>

The "Todoroki-Ku" 125.4 m<sup>2</sup> model apartment, located in the Setagaya-ku district of Tokyo features the hallway, not as an empty space, but actually highlights its qualities by means of the "Shoji" screens whose traditional Japanese application has been transformed into the theatrical "backbone" of the entire apartment.

Normally, the hallway which is normally considered "wasted space", becomes the pivotal piece of the project. Roughly 20 meters of silk-screened, sliding glass doors (custom-made by the Italian furniture manufacturer Misura Emme), evoke woven reeds and paper, as if made according to the art of Ikebana. Lipparini's contemporary reinterpretation of the ancient Japanese Shoji form theatrical "wings" that unite the opposing master bedroom and living room. The long backbone passes through suspended wallboard, recreating simple and modest Kabuki theater. The kitchen faces the living room and in so doing "participates" in its space thanks to the long, semi-transparent glass Shoji. All of the furnishings have been designed by Mauro Lipparini and manufactured by Misura Emme.





Todoroki-Ku位于Tokyo的Setagaya-ku，是一间125.4平方米模范公寓。这间公寓的门厅并不是一个空地，而是安装了日本传统风格的障子，既提升了整间公寓的质感，也使其更具戏剧美感。通常，门厅被认为是“浪费空间”，但这里它成为项目的关键部分。大约20米长的丝质屏风，滑动玻璃门（由意大利家具制造商Misura Emme定制而成），由交织的芦苇叶与纸做成，仿佛像是按插花艺术制成的艺术品。Lipparini对日本传统Shoji进行现代化解读，将其改良成夸张的“两翼”，把面对面的主卧室和起居室连接起来。房间狭长的支柱穿过悬挂的墙板，重新创造出简洁、朴素的Kabuki戏院。厨房对面是起居室，同样也使用了长长的半透明玻璃Shoji。这里所有的家具都是由Mauro Lipparini设计，然后由Misura Emme制造而成的。



# Higashi Shizuoka

日本静岡住宅

Design / Studio Lipparini.  
Designer / Mauro Lipparini  
Location / Japan

Poetic feelings and an affinity for simple, measured gestures have created this model apartment's relaxing, yet dynamic set design and sober atmosphere. The focus point of the project is the reinterpretation of the tatami room: the home's center of gravity. Lipparini has reinterpreted the traditionally closed, secluded environment of the tatami room as an open space. His new, innovative configuration of the tatami room transforms it into a stage, as if a convivial platform, both intimate and dilated.

Lipparini's reinterpretation of the tatami room, both in terms of dimensions and materials, highlights his sensitive interpretation of contemporary fusion. The macroscopic parallel lines on the floor hint and accent the tatami room reinterpreted with new materials: wood and stone.

The various rooms of the home, in keeping with the finest Japanese tradition, are separated, yet reinterpreted by Lipparini with unexpected solutions: silk-screened, transparent sliding glass doors, glass brick walls, and traditional bamboo roll-up blinds. All of the furniture has been designed by Mauro Lipparini and manufactured by the leading Italian brand, Misura Emme.





这幢住宅创造出轻松、充满活力、平和的艺术氛围，体现了设计师所有的诗意情怀以及对简洁、经典的追求。这一项目的主要看点是对榻榻米式房间的重新阐述：房间的重力中心点。设计师重新阐述了传统意义上榻榻米式房间封闭的、僻静的环境，营造出一种开放的空间。他对榻榻米式房间的创新的重置将它变成了平台，似乎是亲密、随和的展示。

Lipparini对榻榻米式房间的重读，无论在材质，还是空间上，强调了他对当代艺术融合的敏感。地板上的宏观的平行线条加强了房间的形象感，凸显了新式材料的应用：木头和石头。

住宅的不同房间，不仅保留了良好的日本传统——分离的、独立的状态，而且设计师采取了一种意想不到的方法：丝质的材质，透明的滑动玻璃门，玻璃砖墙和传统意义上的竹质百叶窗。

Mauro Lipparini设计了所有的家具，并由意大利顶级名牌 Misura Emme制造。

